

Afonica

Ambients for Engine Testing

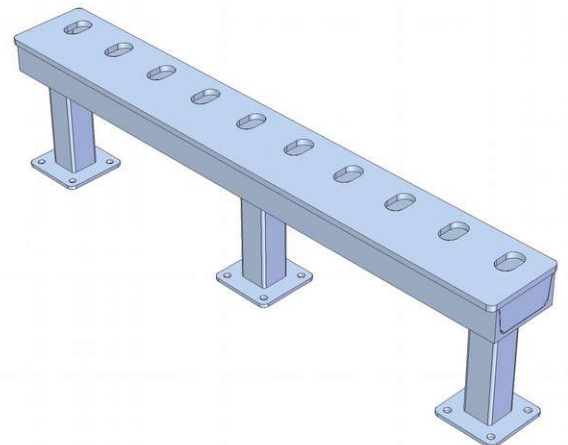
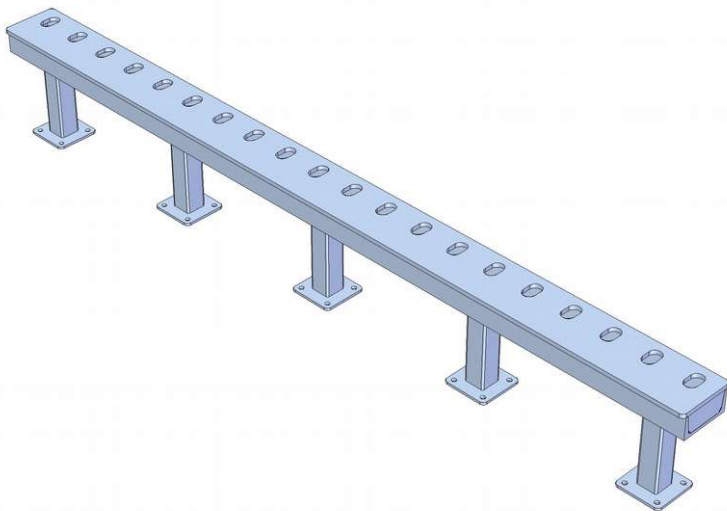
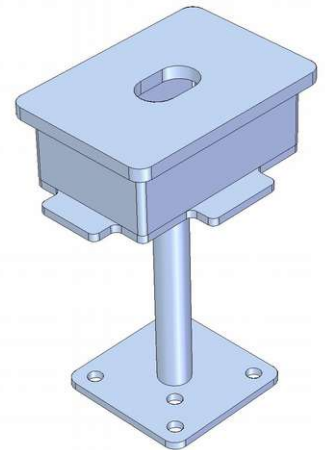
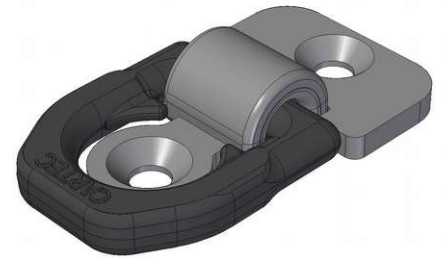


Fixing Systems

Afonica provides its customers with the experience and quality gained in over a decade of work carried out to perfection in the sector of soundproofing cabins for engine test rooms.

The fastening systems for fastening the test vehicle to a roller bench are described below in such a way as to fasten it easily and stably in order to carry out the tests in total safety.

In addition to what is described below, Afonica manufactures customized products and/or on specific request to meet the specific needs of each customer, situation, context, performance.





Superface Fixings

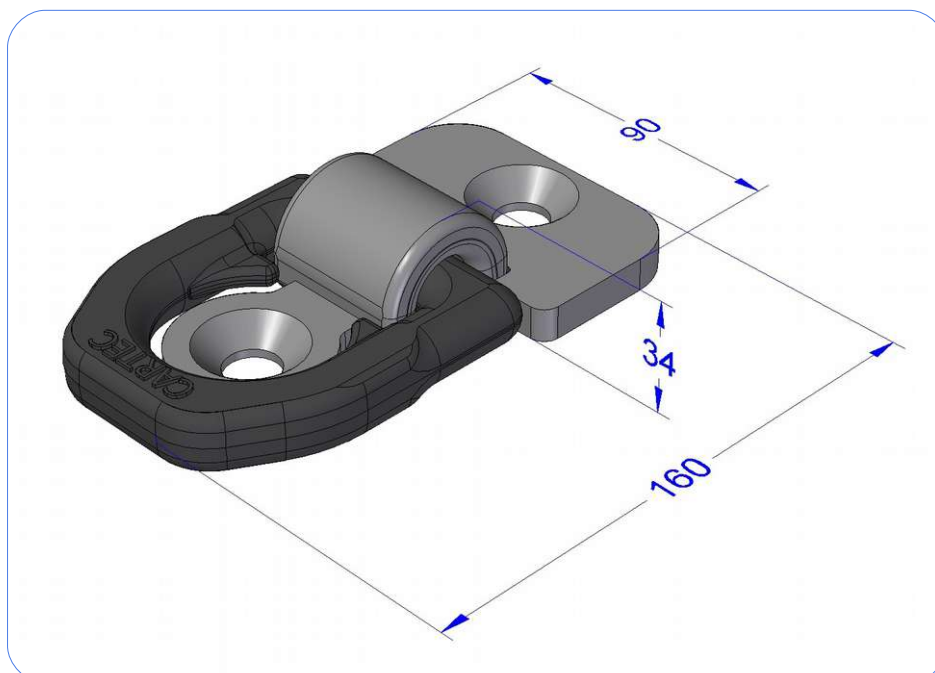
The fixings on the surface allow the realization of the fixing without the need for masonry works: by means of suitably sized plugs they are fixed to the floor.

Characteristics

- Load 8000 kg/each
- Material pressed and welded steel
- Reliability over time
- Excellent mobility
- Easy of use
- Supplied with screwa and dowels
- Standard colour: RAL 7044 (optional of your choice)



#	Code	Description	L	W	H	Price
1	750-AS-C831X08-01	Single eye fixing on floor surface	160	90	34	
2	NOTES: measures in mm, prices EXW and VAT excluded.					

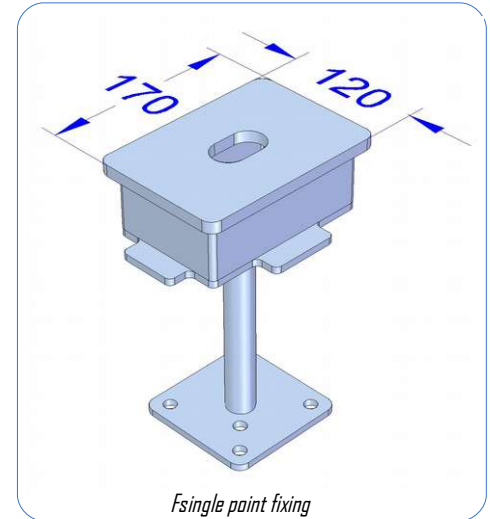




Flush Floor Fixings

The fixings flush with the floor allow the fixing to be made without protruding beyond the level of the walking surface of the building. They require masonry work and are only the best solution in cases where the test bench is placed in the pit.

They are available in the single fixing point version as well as in the multi-point fixing version, which makes the possibility of creating placements of the vehicle tie-down belts or chains more flexible in the best configuration with respect to the anchor points of the vehicle under test.



Characteristics

- Load 8000 kg/cad
- Material welded steel
- Excellent mobility
- Easy of use
- Standard colour: RAL 7044 (optional of your choice)

#	Code	Description	L	W	H	Price
1	752-AS-10	Single fixing flush floor hook, embedded in the floor	120	170	0	
2	751-AS-10-1000	Multiple fixing flush floor hooks bar, embedded in the floor, 1 m lenght	1000	140	0	
3	751-AS-10-2000	Multiple fixing flush floor hooks bar, embedded in the floor, 2 m lenght	2000	140	0	
4	NOTES: measures in mm, prices EXW and VAT excluded.					

